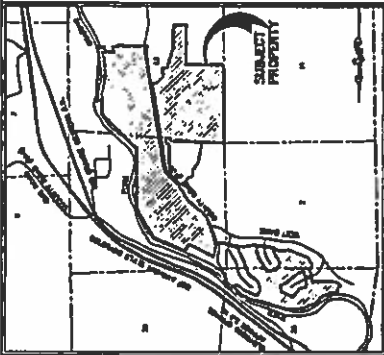


EXHIBIT B

# IRONBRIDGE Planned Unit Development

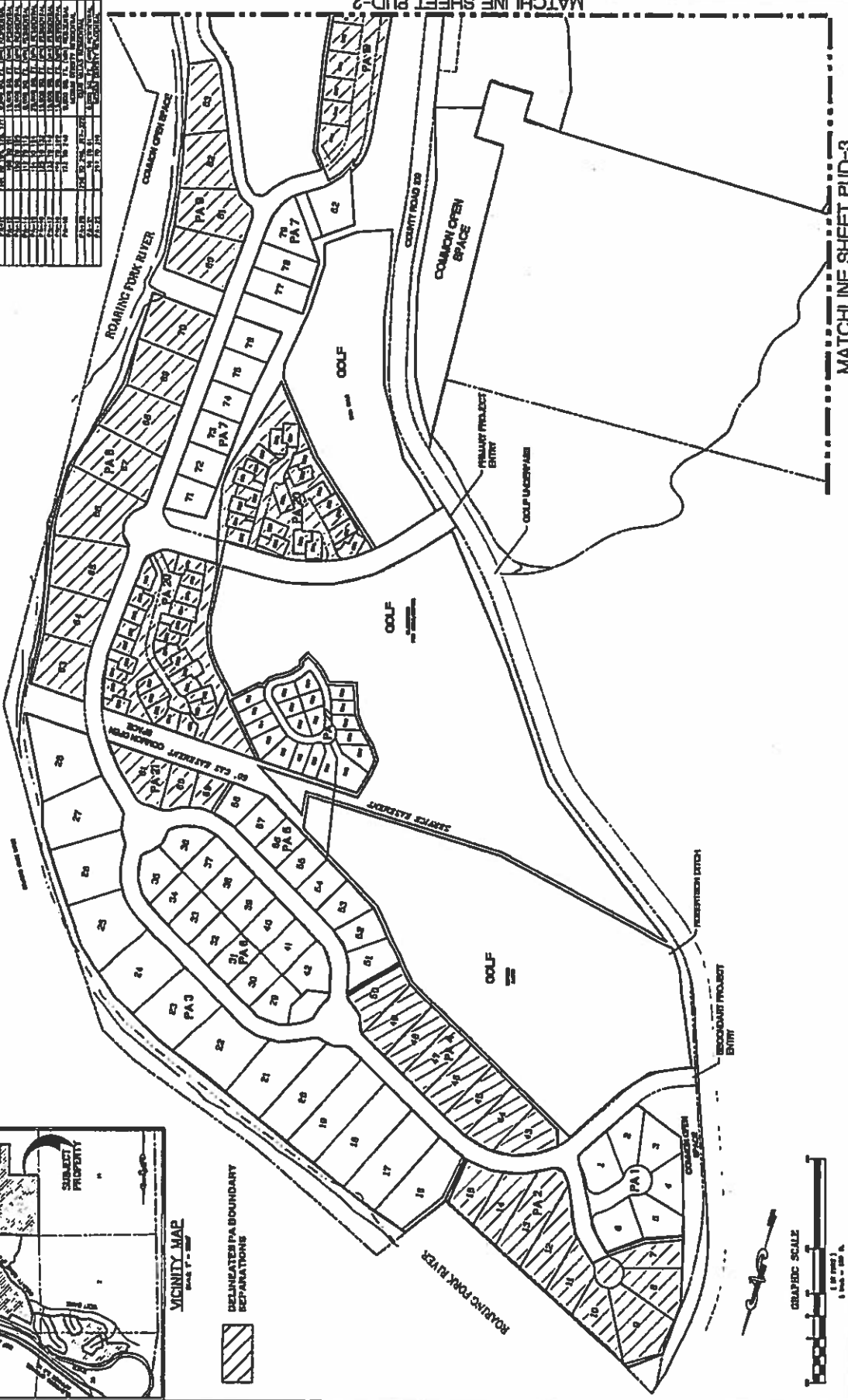


DELINEATES PA BOUNDARY  
REPARATIONS



TRANSFORMER PLACING AREA BREAKOUT  
MAY, 2018

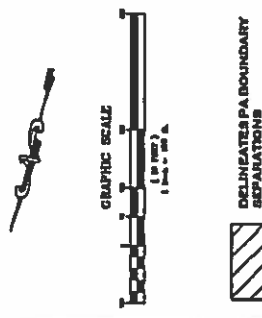
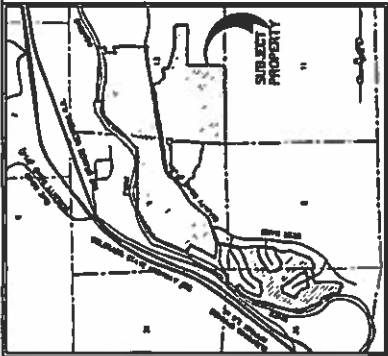
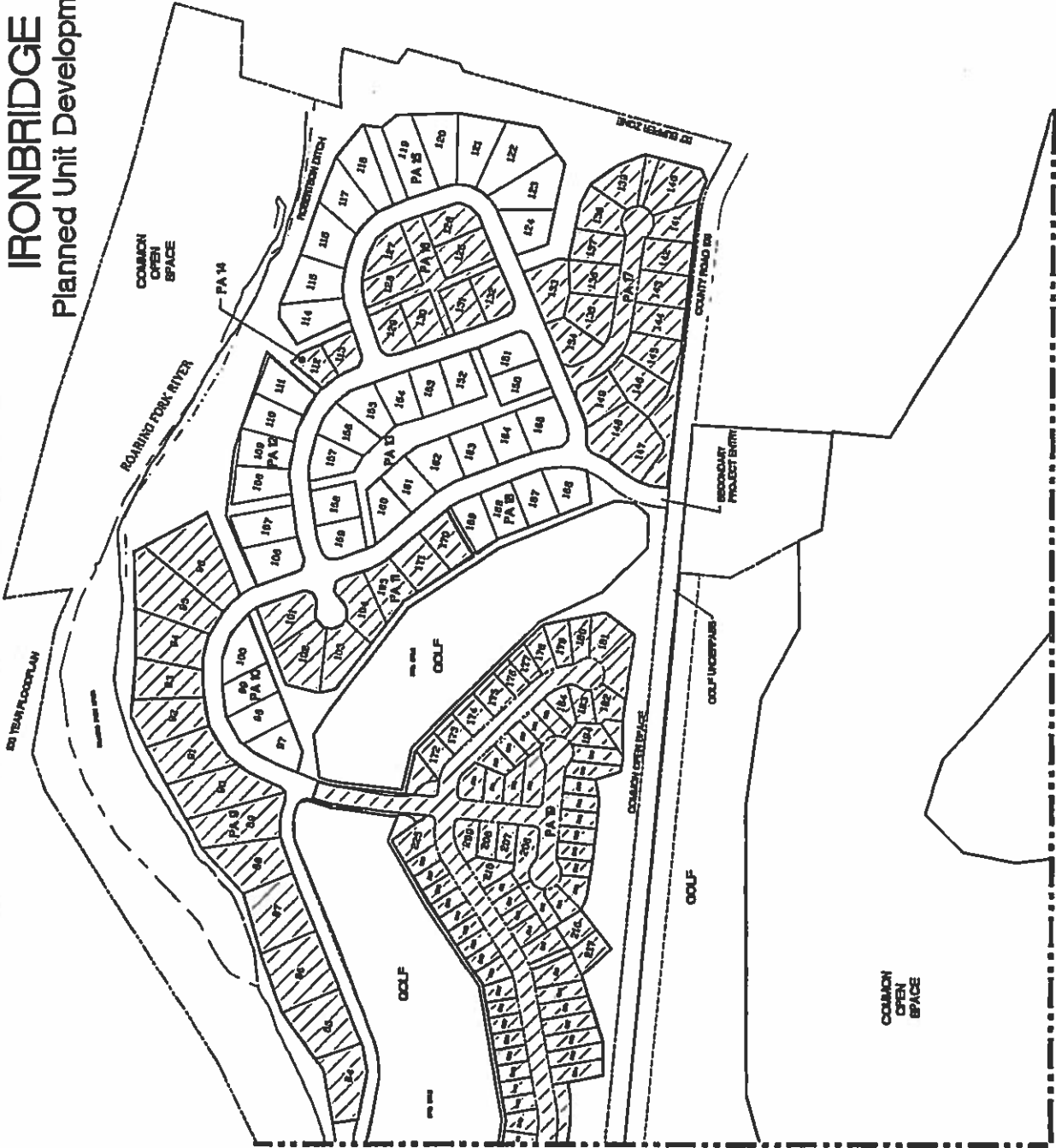
PLACING AREA	LOT NUMBER	TRANSFORMER
PA 1	1	1
PA 2	2	2
PA 3	3	3
PA 4	4	4
PA 5	5	5
PA 6	6	6
PA 7	7	7
PA 8	8	8
PA 9	9	9
PA 10	10	10
PA 11	11	11
PA 12	12	12
PA 13	13	13
PA 14	14	14
PA 15	15	15
PA 16	16	16
PA 17	17	17
PA 18	18	18
PA 19	19	19
PA 20	20	20
PA 21	21	21
PA 22	22	22
PA 23	23	23
PA 24	24	24
PA 25	25	25
PA 26	26	26
PA 27	27	27
PA 28	28	28
PA 29	29	29
PA 30	30	30
PA 31	31	31
PA 32	32	32
PA 33	33	33
PA 34	34	34
PA 35	35	35
PA 36	36	36
PA 37	37	37
PA 38	38	38
PA 39	39	39
PA 40	40	40
PA 41	41	41
PA 42	42	42
PA 43	43	43
PA 44	44	44
PA 45	45	45
PA 46	46	46
PA 47	47	47
PA 48	48	48
PA 49	49	49
PA 50	50	50
PA 51	51	51
PA 52	52	52
PA 53	53	53
PA 54	54	54
PA 55	55	55
PA 56	56	56
PA 57	57	57
PA 58	58	58
PA 59	59	59
PA 60	60	60
PA 61	61	61
PA 62	62	62
PA 63	63	63
PA 64	64	64
PA 65	65	65
PA 66	66	66
PA 67	67	67
PA 68	68	68
PA 69	69	69
PA 70	70	70
PA 71	71	71
PA 72	72	72
PA 73	73	73
PA 74	74	74
PA 75	75	75
PA 76	76	76
PA 77	77	77
PA 78	78	78
PA 79	79	79
PA 80	80	80
PA 81	81	81
PA 82	82	82
PA 83	83	83
PA 84	84	84
PA 85	85	85
PA 86	86	86
PA 87	87	87
PA 88	88	88
PA 89	89	89
PA 90	90	90
PA 91	91	91
PA 92	92	92
PA 93	93	93
PA 94	94	94
PA 95	95	95
PA 96	96	96
PA 97	97	97
PA 98	98	98
PA 99	99	99
PA 100	100	100



Receipt #: 882594  
09/20/2016 09:05:35 AM  
19 of 21 Rec Fee: \$0.00 Doc Fee: \$0.00  
Jean Alberico  
GARFIELD COUNTY CO

# IRONBRIDGE

## Planned Unit Development



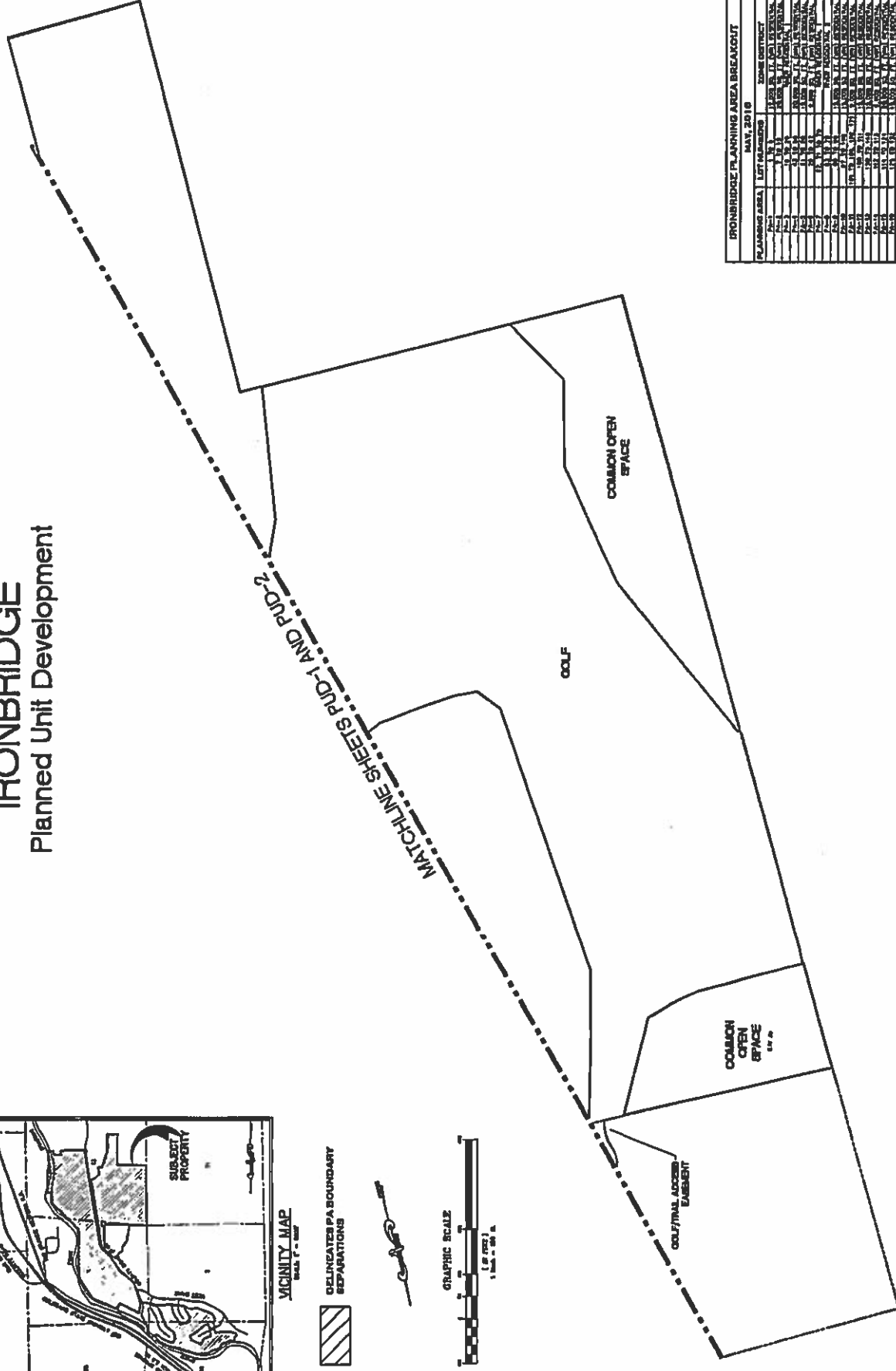
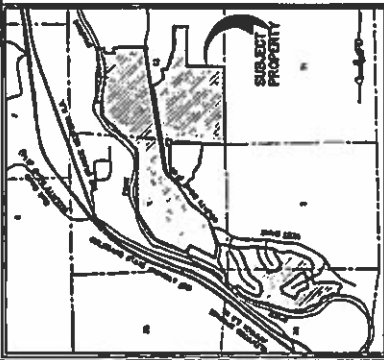
**IRONBRIDGE PLANNING AREA BREAKOUT**  
DATE: 04/18/18

PLANNING AREA	LEFT ADDRESS	RIGHT ADDRESS	ZONE DISTRICT
PA 1	100	109	RESIDENTIAL
PA 2	110	119	RESIDENTIAL
PA 3	120	129	RESIDENTIAL
PA 4	130	139	RESIDENTIAL
PA 5	140	149	RESIDENTIAL
PA 6	150	159	RESIDENTIAL
PA 7	160	169	RESIDENTIAL
PA 8	170	179	RESIDENTIAL
PA 9	180	189	RESIDENTIAL
PA 10	190	199	RESIDENTIAL
PA 11	200	209	RESIDENTIAL
PA 12	210	219	RESIDENTIAL
PA 13	220	229	RESIDENTIAL
PA 14	230	239	RESIDENTIAL
PA 15	240	249	RESIDENTIAL
PA 16	250	259	RESIDENTIAL
PA 17	260	269	RESIDENTIAL
PA 18	270	279	RESIDENTIAL
PA 19	280	289	RESIDENTIAL
PA 20	290	299	RESIDENTIAL
PA 21	300	309	RESIDENTIAL
PA 22	310	319	RESIDENTIAL
PA 23	320	329	RESIDENTIAL
PA 24	330	339	RESIDENTIAL
PA 25	340	349	RESIDENTIAL
PA 26	350	359	RESIDENTIAL
PA 27	360	369	RESIDENTIAL
PA 28	370	379	RESIDENTIAL
PA 29	380	389	RESIDENTIAL
PA 30	390	399	RESIDENTIAL
PA 31	400	409	RESIDENTIAL
PA 32	410	419	RESIDENTIAL
PA 33	420	429	RESIDENTIAL
PA 34	430	439	RESIDENTIAL
PA 35	440	449	RESIDENTIAL
PA 36	450	459	RESIDENTIAL
PA 37	460	469	RESIDENTIAL
PA 38	470	479	RESIDENTIAL
PA 39	480	489	RESIDENTIAL
PA 40	490	499	RESIDENTIAL
PA 41	500	509	RESIDENTIAL
PA 42	510	519	RESIDENTIAL
PA 43	520	529	RESIDENTIAL
PA 44	530	539	RESIDENTIAL
PA 45	540	549	RESIDENTIAL
PA 46	550	559	RESIDENTIAL
PA 47	560	569	RESIDENTIAL
PA 48	570	579	RESIDENTIAL
PA 49	580	589	RESIDENTIAL
PA 50	590	599	RESIDENTIAL
PA 51	600	609	RESIDENTIAL
PA 52	610	619	RESIDENTIAL
PA 53	620	629	RESIDENTIAL
PA 54	630	639	RESIDENTIAL
PA 55	640	649	RESIDENTIAL
PA 56	650	659	RESIDENTIAL
PA 57	660	669	RESIDENTIAL
PA 58	670	679	RESIDENTIAL
PA 59	680	689	RESIDENTIAL
PA 60	690	699	RESIDENTIAL
PA 61	700	709	RESIDENTIAL
PA 62	710	719	RESIDENTIAL
PA 63	720	729	RESIDENTIAL
PA 64	730	739	RESIDENTIAL
PA 65	740	749	RESIDENTIAL
PA 66	750	759	RESIDENTIAL
PA 67	760	769	RESIDENTIAL
PA 68	770	779	RESIDENTIAL
PA 69	780	789	RESIDENTIAL
PA 70	790	799	RESIDENTIAL
PA 71	800	809	RESIDENTIAL
PA 72	810	819	RESIDENTIAL
PA 73	820	829	RESIDENTIAL
PA 74	830	839	RESIDENTIAL
PA 75	840	849	RESIDENTIAL
PA 76	850	859	RESIDENTIAL
PA 77	860	869	RESIDENTIAL
PA 78	870	879	RESIDENTIAL
PA 79	880	889	RESIDENTIAL
PA 80	890	899	RESIDENTIAL
PA 81	900	909	RESIDENTIAL
PA 82	910	919	RESIDENTIAL
PA 83	920	929	RESIDENTIAL
PA 84	930	939	RESIDENTIAL
PA 85	940	949	RESIDENTIAL
PA 86	950	959	RESIDENTIAL
PA 87	960	969	RESIDENTIAL
PA 88	970	979	RESIDENTIAL
PA 89	980	989	RESIDENTIAL
PA 90	990	999	RESIDENTIAL

Receipt No: 862594  
 Jean Alberico  
 09/20/2016 09:05:35 AM  
 20 at 21 Rec Fee: \$0.00 Doc Fee: \$0.00 GARFIELD COUNTY CO

# IRONBRIDGE

## Planned Unit Development



IRONBRIDGE PLANNING AREA BREAKOUT  
MAY, 2016

PLANNING AREA	LOT NUMBERS	ZONE DISTRICT
1	1-10	RESIDENTIAL SINGLE-FAMILY
2	11-20	RESIDENTIAL SINGLE-FAMILY
3	21-30	RESIDENTIAL SINGLE-FAMILY
4	31-40	RESIDENTIAL SINGLE-FAMILY
5	41-50	RESIDENTIAL SINGLE-FAMILY
6	51-60	RESIDENTIAL SINGLE-FAMILY
7	61-70	RESIDENTIAL SINGLE-FAMILY
8	71-80	RESIDENTIAL SINGLE-FAMILY
9	81-90	RESIDENTIAL SINGLE-FAMILY
10	91-100	RESIDENTIAL SINGLE-FAMILY
11	101-110	RESIDENTIAL SINGLE-FAMILY
12	111-120	RESIDENTIAL SINGLE-FAMILY
13	121-130	RESIDENTIAL SINGLE-FAMILY
14	131-140	RESIDENTIAL SINGLE-FAMILY
15	141-150	RESIDENTIAL SINGLE-FAMILY
16	151-160	RESIDENTIAL SINGLE-FAMILY
17	161-170	RESIDENTIAL SINGLE-FAMILY
18	171-180	RESIDENTIAL SINGLE-FAMILY
19	181-190	RESIDENTIAL SINGLE-FAMILY
20	191-200	RESIDENTIAL SINGLE-FAMILY
21	201-210	RESIDENTIAL SINGLE-FAMILY
22	211-220	RESIDENTIAL SINGLE-FAMILY
23	221-230	RESIDENTIAL SINGLE-FAMILY
24	231-240	RESIDENTIAL SINGLE-FAMILY
25	241-250	RESIDENTIAL SINGLE-FAMILY
26	251-260	RESIDENTIAL SINGLE-FAMILY
27	261-270	RESIDENTIAL SINGLE-FAMILY
28	271-280	RESIDENTIAL SINGLE-FAMILY
29	281-290	RESIDENTIAL SINGLE-FAMILY
30	291-300	RESIDENTIAL SINGLE-FAMILY
31	301-310	RESIDENTIAL SINGLE-FAMILY
32	311-320	RESIDENTIAL SINGLE-FAMILY
33	321-330	RESIDENTIAL SINGLE-FAMILY
34	331-340	RESIDENTIAL SINGLE-FAMILY
35	341-350	RESIDENTIAL SINGLE-FAMILY
36	351-360	RESIDENTIAL SINGLE-FAMILY
37	361-370	RESIDENTIAL SINGLE-FAMILY
38	371-380	RESIDENTIAL SINGLE-FAMILY
39	381-390	RESIDENTIAL SINGLE-FAMILY
40	391-400	RESIDENTIAL SINGLE-FAMILY
41	401-410	RESIDENTIAL SINGLE-FAMILY
42	411-420	RESIDENTIAL SINGLE-FAMILY
43	421-430	RESIDENTIAL SINGLE-FAMILY
44	431-440	RESIDENTIAL SINGLE-FAMILY
45	441-450	RESIDENTIAL SINGLE-FAMILY
46	451-460	RESIDENTIAL SINGLE-FAMILY
47	461-470	RESIDENTIAL SINGLE-FAMILY
48	471-480	RESIDENTIAL SINGLE-FAMILY
49	481-490	RESIDENTIAL SINGLE-FAMILY
50	491-500	RESIDENTIAL SINGLE-FAMILY
51	501-510	RESIDENTIAL SINGLE-FAMILY
52	511-520	RESIDENTIAL SINGLE-FAMILY
53	521-530	RESIDENTIAL SINGLE-FAMILY
54	531-540	RESIDENTIAL SINGLE-FAMILY
55	541-550	RESIDENTIAL SINGLE-FAMILY
56	551-560	RESIDENTIAL SINGLE-FAMILY
57	561-570	RESIDENTIAL SINGLE-FAMILY
58	571-580	RESIDENTIAL SINGLE-FAMILY
59	581-590	RESIDENTIAL SINGLE-FAMILY
60	591-600	RESIDENTIAL SINGLE-FAMILY
61	601-610	RESIDENTIAL SINGLE-FAMILY
62	611-620	RESIDENTIAL SINGLE-FAMILY
63	621-630	RESIDENTIAL SINGLE-FAMILY
64	631-640	RESIDENTIAL SINGLE-FAMILY
65	641-650	RESIDENTIAL SINGLE-FAMILY
66	651-660	RESIDENTIAL SINGLE-FAMILY
67	661-670	RESIDENTIAL SINGLE-FAMILY
68	671-680	RESIDENTIAL SINGLE-FAMILY
69	681-690	RESIDENTIAL SINGLE-FAMILY
70	691-700	RESIDENTIAL SINGLE-FAMILY
71	701-710	RESIDENTIAL SINGLE-FAMILY
72	711-720	RESIDENTIAL SINGLE-FAMILY
73	721-730	RESIDENTIAL SINGLE-FAMILY
74	731-740	RESIDENTIAL SINGLE-FAMILY
75	741-750	RESIDENTIAL SINGLE-FAMILY
76	751-760	RESIDENTIAL SINGLE-FAMILY
77	761-770	RESIDENTIAL SINGLE-FAMILY
78	771-780	RESIDENTIAL SINGLE-FAMILY
79	781-790	RESIDENTIAL SINGLE-FAMILY
80	791-800	RESIDENTIAL SINGLE-FAMILY
81	801-810	RESIDENTIAL SINGLE-FAMILY
82	811-820	RESIDENTIAL SINGLE-FAMILY
83	821-830	RESIDENTIAL SINGLE-FAMILY
84	831-840	RESIDENTIAL SINGLE-FAMILY
85	841-850	RESIDENTIAL SINGLE-FAMILY
86	851-860	RESIDENTIAL SINGLE-FAMILY
87	861-870	RESIDENTIAL SINGLE-FAMILY
88	871-880	RESIDENTIAL SINGLE-FAMILY
89	881-890	RESIDENTIAL SINGLE-FAMILY
90	891-900	RESIDENTIAL SINGLE-FAMILY
91	901-910	RESIDENTIAL SINGLE-FAMILY
92	911-920	RESIDENTIAL SINGLE-FAMILY
93	921-930	RESIDENTIAL SINGLE-FAMILY
94	931-940	RESIDENTIAL SINGLE-FAMILY
95	941-950	RESIDENTIAL SINGLE-FAMILY
96	951-960	RESIDENTIAL SINGLE-FAMILY
97	961-970	RESIDENTIAL SINGLE-FAMILY
98	971-980	RESIDENTIAL SINGLE-FAMILY
99	981-990	RESIDENTIAL SINGLE-FAMILY
100	991-1000	RESIDENTIAL SINGLE-FAMILY

Reception: 882594  
 09/20/2016 09:05:35 AM  
 Jean Albericio  
 21 of 21 Rec Fee:\$0.00 Doc Fee:\$0.00 GARFIELD COUNTY CO