



UPPER COLORADO RIVER
FIRE MANAGEMENT UNIT
BLM-NORTHWEST DISTRICT
BLM-SOUTHWEST DISTRICT
USFS-WHITE RIVER NATIONAL FOREST



NEWS RELEASE

July 6, 2017

Contacts: Marcia Gilles, U.S. Forest Service, 970-827-5152

Courtney Whiteman, Bureau of Land Management, 303-239-3668

Additional Fire restrictions begin Friday, July 7 due to High Fire Danger

Silt, Colo. - Stage 1 fire restrictions begin at 12:01 a.m. Friday, July 7 for the White River National Forest, Bureau of Land Management-administered lands, unincorporated and private lands in Summit, Eagle and Rio Blanco counties. Stage 1 fire restrictions are already in effect in Mesa, Garfield, and Pitkin counties.

Fire managers base decisions about fire restrictions on specific moisture measurements in vegetation and other risk factors such as predicted weather and amount of current fire activity. The BLM, White River National Forest, and Summit, Eagle and Rio Blanco County Sheriff's Offices will be enforcing the following temporary restrictions:

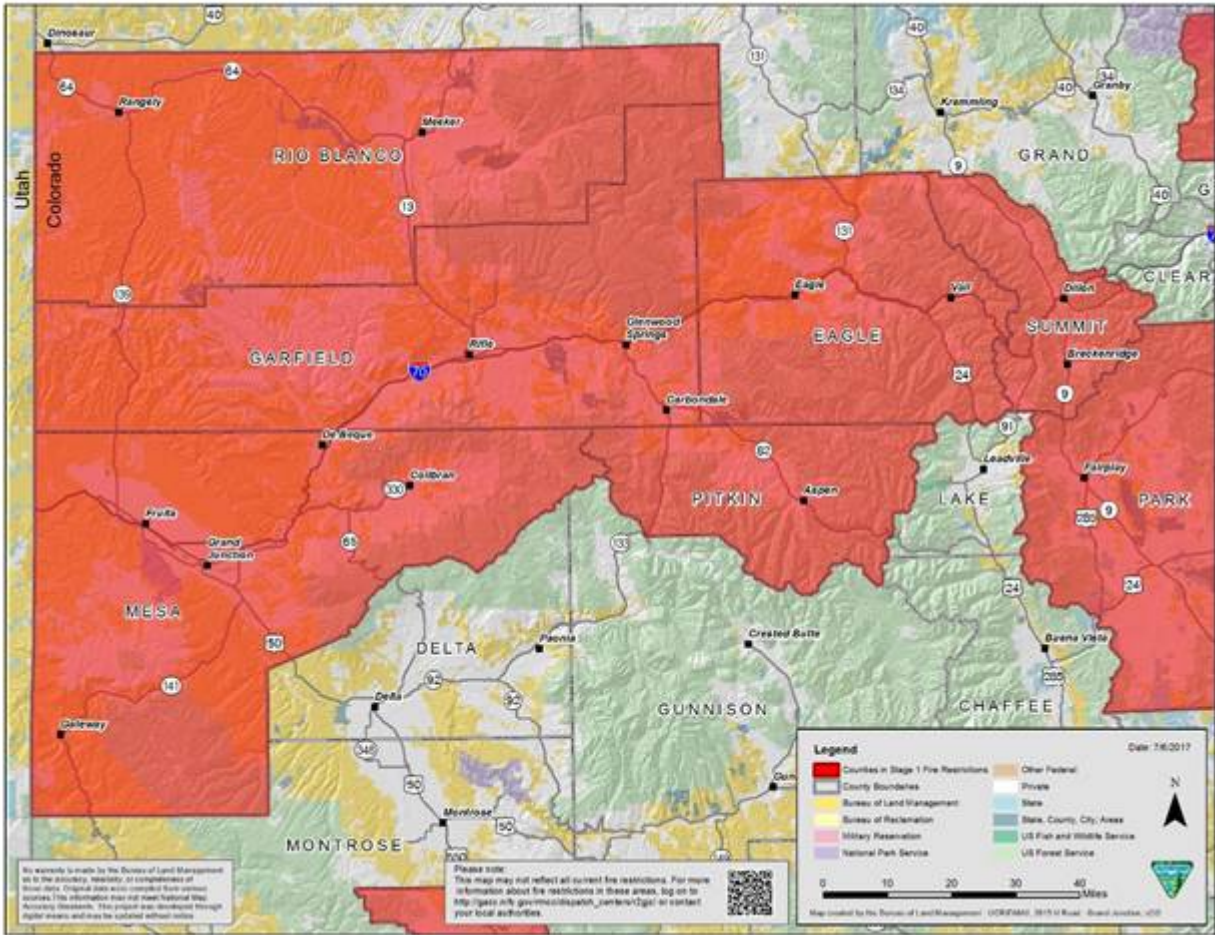
- Campfires are only allowed within designated fire grates in developed campgrounds (i.e., a metal, in-ground containment structure -- fire pans and rock campfire rings are not acceptable).
- No fires of any type, including charcoal, outside of developed areas.
- No smoking except within an enclosed vehicle or building, a developed recreation site or in a barren area free of vegetation.
- No use of explosive materials, including explosive targets.
- No welding or operation of an acetylene or other similar torch with open flame except from an area that has been cleared of vegetation.
- No operation of any internal combustion engine without a spark arresting device properly installed and in working order.

Fireworks are always prohibited on BLM, National Forest and National Park Service lands.

Fire restrictions on these lands will be in place until further notice. Those found responsible for starting wildfires will also face restitution costs of suppressing the fire.

For more information about fire restrictions in these areas, go to:

https://gacc.nifc.gov/rmcc/dispatch_centers/r2gjc/fireinfo_restrictions/index.html



Matt Ehrman
Forest Planner
Forest Service
White River National Forest

p: 970-945-3212
mehrman@fs.fed.us

900 Grand Ave
 Glenwood Springs, CO 81601
www.fs.fed.us



Caring for the land and serving people